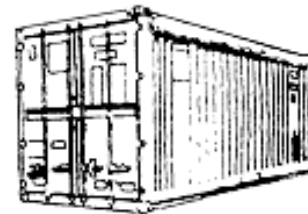
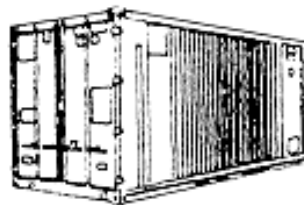


CONTENEDORES MARÍTIMOS DE 20'



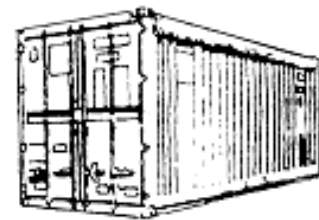
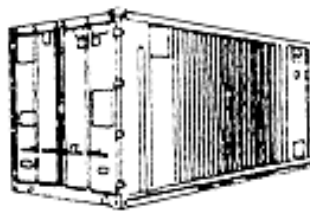
	20' Dry Cargo Container		20' Open Top Container	
Interno				
Largo	5.90 m	19'4.2"	5.79 m	19'0"
Ancho	2.35 m	7'8.5"	2.25 m	7'4"
Alto	2.38 m	7'9.7"	2.32 m	7'7.3"
Externo				
Largo	6.06 m	19'10.5"	6.06 m	19'10.5"
Ancho	2.44 m	8'	2.44 m	8'
Alto	2.59 m	8'6"	2.59 m	8'6"
Puerta				
Ancho	2.34 m	7'8.1"	2.32 m	7'7.3"
Alto	2.27 m	7'5.4"	2.22 m	7'3.4"
Capacidad, Volumen	33.0 m ³	1.165 cu.ft	31.8 m ³	1.124 cu.ft
Capacidad en Peso	21.670 kg	47.760 lbs.	21.650 kg	47.700 lbs.
Tara Contenedor	2.330 kg	5.140 lbs.	2.350 kg	5.200 lbs.
Peso Bruto Máximo	24.000 kg	52.900 lbs.	24.000 kg	52.900 lbs.

CONTENEDORES MARÍTIMOS DE 20'



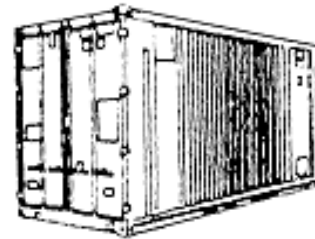
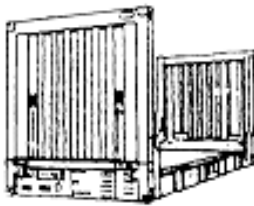
20' Flatrack		20' Platform		Mafi Trailer	
				20'	40'
5.88 m	19'3"	5.98 m	19'7.4"		
2.24 m	7'4"	2.38 m	7'9.7"		
2.26 m	7'5"				
6.06 m	19'10.5"	6.06 m	19'10.5"	6.10 m	12.23 m
2.44 m	8'	2.44 m	8'	2.50 m	2.50 m
2.59 m	8'6"	0.32 m	1'7.2"	0.62m	0.85m
29.8 m ³	1.052 cu.ft	18.400 kg	40.580 lbs.	40.000 kg	50/100 ton
21.540 kg	46.577 lbs.	1.550 kg	3.420 lbs.	2.900 kg	6.8 ton
2.460 kg	5.423 lbs.	24.000 kg	52.000 lbs.	42.900 kg	
24.000 kg	52.000 lbs.				

CONTENEDORES MARÍTIMOS DE 40'



	40' Dry Cargo Container		40' Open Top Container	
Interno				
Largo	12.02 m	39'5.2"	12.02 m	39'5.2"
Ancho	2.35 m	7'8.5"	2.33 m	7'7.7"
Alto	2.38 m	7'9.7"	2.32 m	7'7.3"
Externo				
Largo	12.19 m	40'	12.19 m	40'
Ancho	2.44 m	8'	2.44 m	8'
Alto	2.59 m	8'6"	2.59 m	8'6"
Puerta				
Ancho	2.34 m	7'8.1"	2.32 m	7'7.3"
Alto	2.27 m	7'5.4"	2.22 m	7'3.4"
Capacidad, Volumen	67.2 m ³	2.373 cu.ft	64.9 m ³	2.293 cu.ft
Capacidad en Peso	26.500 kg	58.420 lbs.	26.310 kg	58.000 lbs.
Tara Contenedor	3.980 kg	8.780 lbs.	4.170 kg	9.000 lbs.
Peso Bruto Máximo	30.480 kg	67.200 lbs.	30.480 kg	67.200 lbs.

CONTENEDORES MARÍTIMOS DE 40'



40' Flatrack		40' Platform		40' High Cube	
12.06 m	39'6"	12.11 m	39'9"	12.03 m	39'6"
2.22 m	7'4"	2.36 m	7'9"	2.35 m	7'8"
1.94 m	6'5"			2.70 m	8'8"
12.19 m	40'	12.19 m	40'	12.19 m	40'
2.44 m	8'	2.44 m	8'	2.44 m	8'
2.59 m	8'6"	0.65 m	2'1"	2.90 m	9'6"
				2.34 m	7'6"
				2.58 m	8'4"
				76.3 m ³	
30.567 kg	67.388 lbs.	35.780 kg	78.881 lbs.	26.095 kg	57.530 lbs.
4.995 kg	11.012 lbs.	4.220 kg	9.303 lbs.	4.385 kg	9.670 lbs.
35.562 kg	78.400 lbs.	40.000 kg	88.184 lbs.	30.480 kg	67.200 lbs.